



RESTORE YOUR SHORE

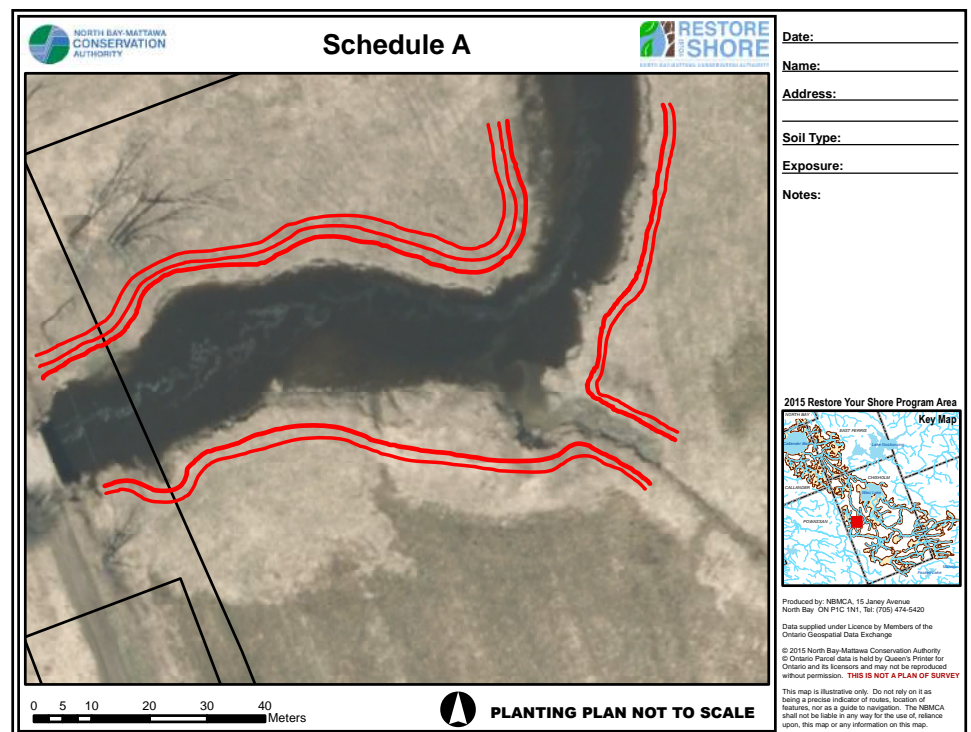
PLANTING FOR CLEANER WATER

RURAL STREAM BANK

These plants, shrubs and trees make ideal streambank vegetation in our region.
Plants are chosen according to specific light, moisture and soil conditions.

Sample Planting Plan

This sample planting plan consists of 275 meters of shoreline with 85 trees and 130 shrubs. The plantings are on either side of the stream and cover approximately 1,320 square meters.



Plant List

QTY	COMMON NAME	SCIENTIFIC NAME	PLANT TYPE	CONDITIONS
15	silver maple	<i>Acer saccharinum</i>	Tree	Wet to medium
35	white cedar	<i>Thuja occidentalis</i>	Tree	Wet to medium
20	serviceberry	<i>Amelanchier canadensis</i>	Tree/Shrub	Wet to medium
20	nannyberry	<i>Viburnum lentago</i>	Shrub	Dry to wet
15	red oak	<i>Quercus rubra</i>	Tree	Medium to dry
35	elderberry	<i>Sambucus canadensis</i>	Shrub	Wet to medium
55	red twig dogwood	<i>Cornus sericea</i>	Shrub	Wet to medium
20	balsam poplar	<i>Populus balsamea</i>	Tree	Wet to medium
215	TOTAL PLANTS			

Plant information: www.nativeplants.evergreen.ca